



ASKING PRICE

£209,000



## THE DETAILS



3



1



3



3 Christian Street

Peel

£209,000

call in today or visit [www.blackgracecowley.com](http://www.blackgracecowley.com) for more details

e: [peel@blackgracecowley.com](mailto:peel@blackgracecowley.com) | w: [blackgracecowley.com](http://blackgracecowley.com) | t: +44 (0) 1624 845 696

a: 9 Atholl Place, PEEL, Isle of Man, IM5 1HE

PROPERTY DETAILS FOR  
3 Christian Street, Peel



PROPERTY DETAILS FOR  
3 Christian Street, Peel



PROPERTY DETAILS FOR  
**3 Christian Street, Peel**





PROPERTY DETAILS FOR

## 3 Christian Street, Peel

### THE DESCRIPTION

- Mid-Terrace Cottage situated in a central location
- Retaining original charm and features
- Entrance Porch, Lounge/Dining Room, Snug
- 3 Bedrooms, 1 Bathroom
- Rear enclosed yard
- Offered for sale with no onward chain
- uPVC double glazed, Gas fired central heating

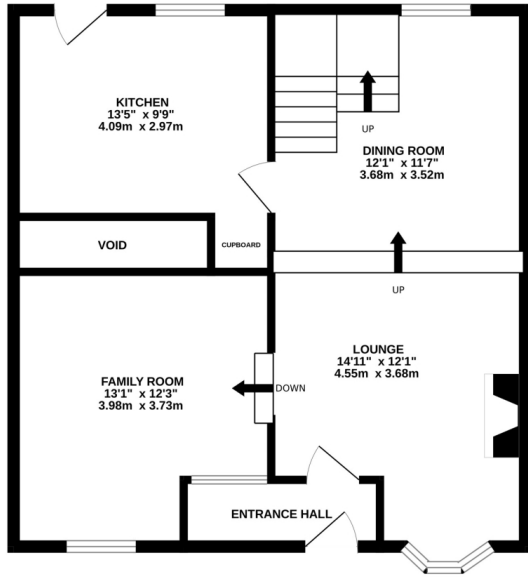
### THE PROPERTY

Black Grace Cowley are pleased to offer 3 Christian Street to the market. A centrally located mid-terraced cottage in Peel, within a short commute to Douglas, Ramsey and the South of the island. Entrance hall leading into the spacious dual aspect Lounge/Diner which has a feature stone fireplace, and archway provides access to the snug/family room. The kitchen is fitted with pine fronted base wall and drawer units and provides access to the rear paved yard. On the first floor is a spacious landing which provides access to the three bedrooms and modern bathroom. At the rear is an enclosed paved garden with an elevated position.

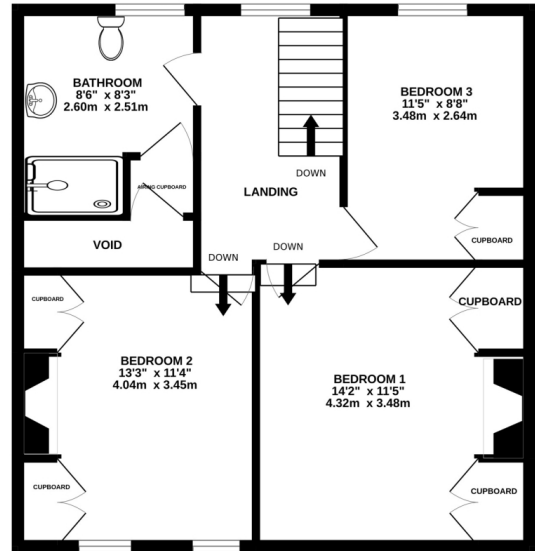
Gas fired central heating. uPVC double glazed. Offered for sale with no onward chain.

# FLOORPLAN

GROUND FLOOR  
617 sq.ft. (57.3 sq.m.) approx.



1ST FLOOR  
604 sq.ft. (56.1 sq.m.) approx.



TOTAL FLOOR AREA: 1221 sq.ft. (113.4 sq.m.) approx.

Whilst every attempt has been made to ensure the accuracy of the floorplan contained here, measurements of doors, windows, rooms and any other items are approximate and no responsibility is taken for any error, omission or mis-statement. This plan is for illustrative purposes only and should be used as such by any prospective purchaser. The services, systems and appliances shown have not been tested and no guarantee as to their operability or efficiency can be given.  
Made with Metropix ©2023



PROPERTY DETAILS FOR

## 3 Christian Street, Peel

### Disclaimer

These particulars are for information purposes only and do not constitute or form any contract nor should any statement contained herein be relied upon as a representation of fact.

Neither the vendor nor Black Grace Cowley (the firm), nor any officer or employee of the firm accept liability or responsibility for any statement contained herein.

The vendor does not by these particulars, nor does the firm, nor does any officer or any employee of the firm have any authority to make or give any representation or warranty whatsoever as regards the property or otherwise. It is the sole responsibility of any person interested in the property described in these particulars to make all proper enquiries and searches to verify the description of the property and all other particulars herein.

**e:** [peel@blackgracecowley.com](mailto:peel@blackgracecowley.com) | **w:** [blackgracecowley.com](http://blackgracecowley.com) | **t:** +44 (0) 1624 845 696

**a:** 9 Atholl Place, PEEL, Isle of Man, IM5 1HE